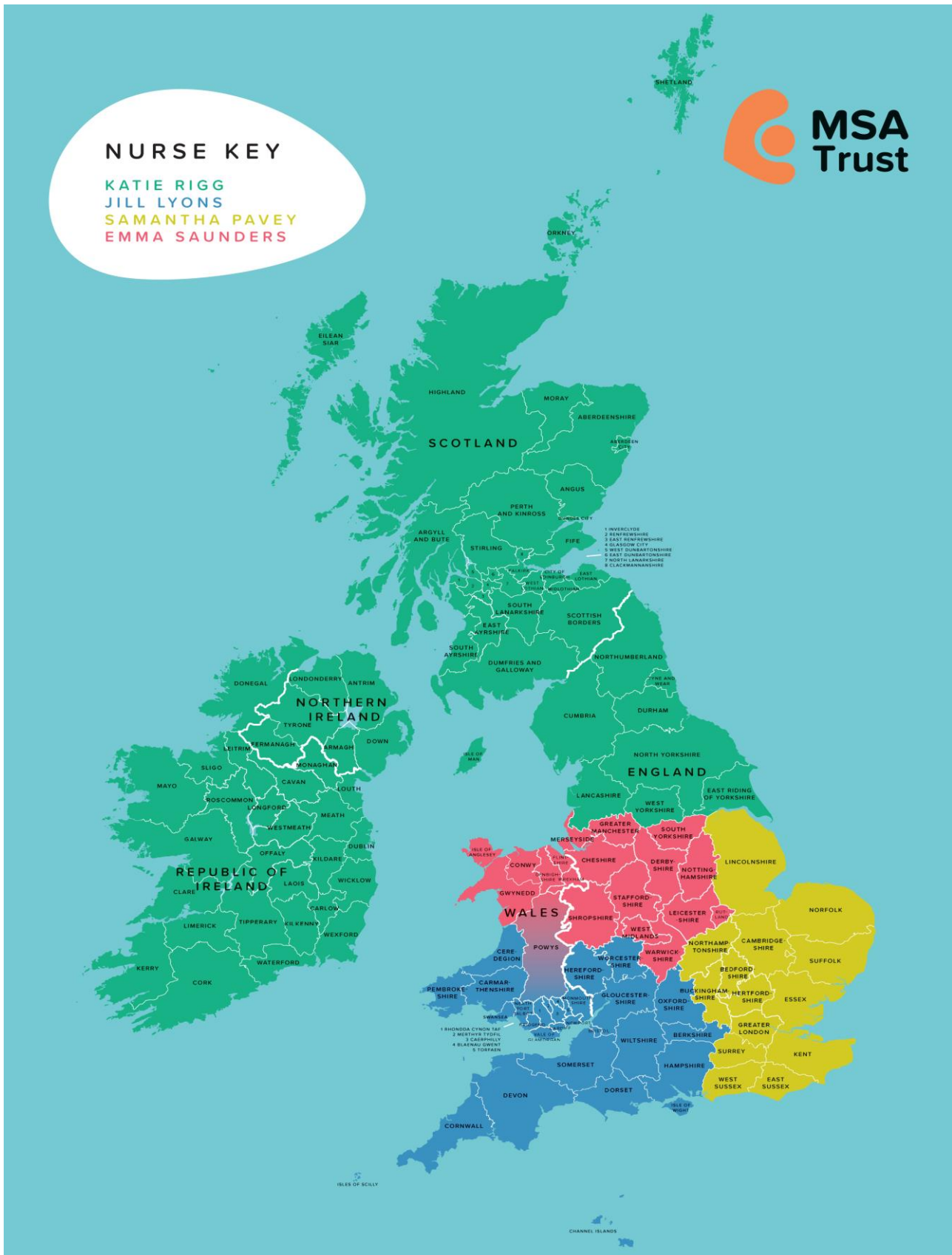


MSA Nurse Specialist Service



This factsheet provides an overview of the range of support provided by the MSA Trust's Nurse Specialists.

The MSA Trust has four Nurse Specialists who cover the United Kingdom and Republic of Ireland between them.



Information and Support Service

What: Our MSA Nurse Specialists provide a telephone and email support service. They offer information about MSA, from living with the illness to symptom management. They can also help explain what further support you may need and where to find it. They are not part of the NHS system and so cannot manage the treatment of someone with MSA but they are willing to speak with the health and care professionals who treat patients with MSA. For this to happen please ask your health professional to get in touch with them.

When: Telephone support operates from Monday to Friday between 9.00–5.00pm or if you prefer you can email them. There is an answer phone if they are out of the office so please leave a message. Calls are normally returned within 24 hours or by the next working day if you call over the weekend; and most are responded to within a few hours of your call.

If you need urgent advice outside of these hours you should contact your GP, the out of hours GP service or call 999.

How: Contact the nurse specialist by either telephone or email;

T: Katie Rigg: 01434 381 932 | Samantha Pavey: 0203 371 0003

T: Jill Lyons: 01934 316 119 | Emma Saunders: 0330 221 1030

Email: nurses@msatrust.org.uk

We also have an Advocacy Officer who is available to offer information and support to members on issues such as benefits (including Continuing Healthcare), assessments and grants. They work Monday- Wednesday, 9.00-5.00pm.

T: Jane Stein: 01404 44241

MSA Support Group Attendance

The Nurse Specialists attend some MSA Support Group meetings located throughout the UK and Ireland. They often give short talks or presentations and will deal with questions and concerns. They are also happy to answer individual queries on a one to one basis. For more information about MSA Support Groups please contact the MSA Trust (details below) or visit the website at: <http://www.msatrust.org.uk/support-for-you/local-support/>

Other Nurse Specialist Services

- Attending specialist MSA clinics around the country
- Providing education sessions to multi-disciplinary team members who are supporting someone living with MSA
- Producing information leaflets for the MSA Trust
- Writing articles for MSA News
- Liaising with Parkinson's Nurse Specialists and other health and care professionals.

Please note that as there are only four Nurse Specialists they are not able to offer home visits.



Multiple System Atrophy Trust

Information, support, education and research

To register with the Trust please visit our website, telephone, email or write to us at:

<http://www.msatrust.org.uk/support-for-you/join-us/>

T: 0333 323 4591 | E: support@msatrust.org.uk

51 St Olav's Court Lower Road London SE16 2XB

Registered in England as Company: 7302036
Registered Charity No. 1137652 (England & Wales) and SC044535 (Scotland)

REVISION DATE: 12/17 | REVIEW DATE: 12/19 | VERSION: 2